

REP.	REFERENCE	NB	PDS	⚙️	🔑
1	2558.5501	1	2,7		
2	2558.5502	1	2,7		M 8-60 + M 8
3	2558.5503	1	2,6		
4	2558.5504	1	2,6		M 8-60 + M 8
5	2558.5505	1	2,1		
6	2558.5506	1	2,1		
7	2558.5507	2	0,03		
8	2558.5508	1	2,2		
9	2558.5509	1	2,2		M 10-30
10	2558.5510	1	1,3		
11	2558.5511	1	1,3		M 14-25 + M 14
12	2558.5512	2	1,6		955750 + M 12
A	CRM550.01	1	14,8		
B	MRD.F.01	1	0,1		
	M 8-60	4			
	M 10-30	2			
	M 14-25	2			
	955750	4			
	M 8	4			
	M 12	4			
	M 14	2			

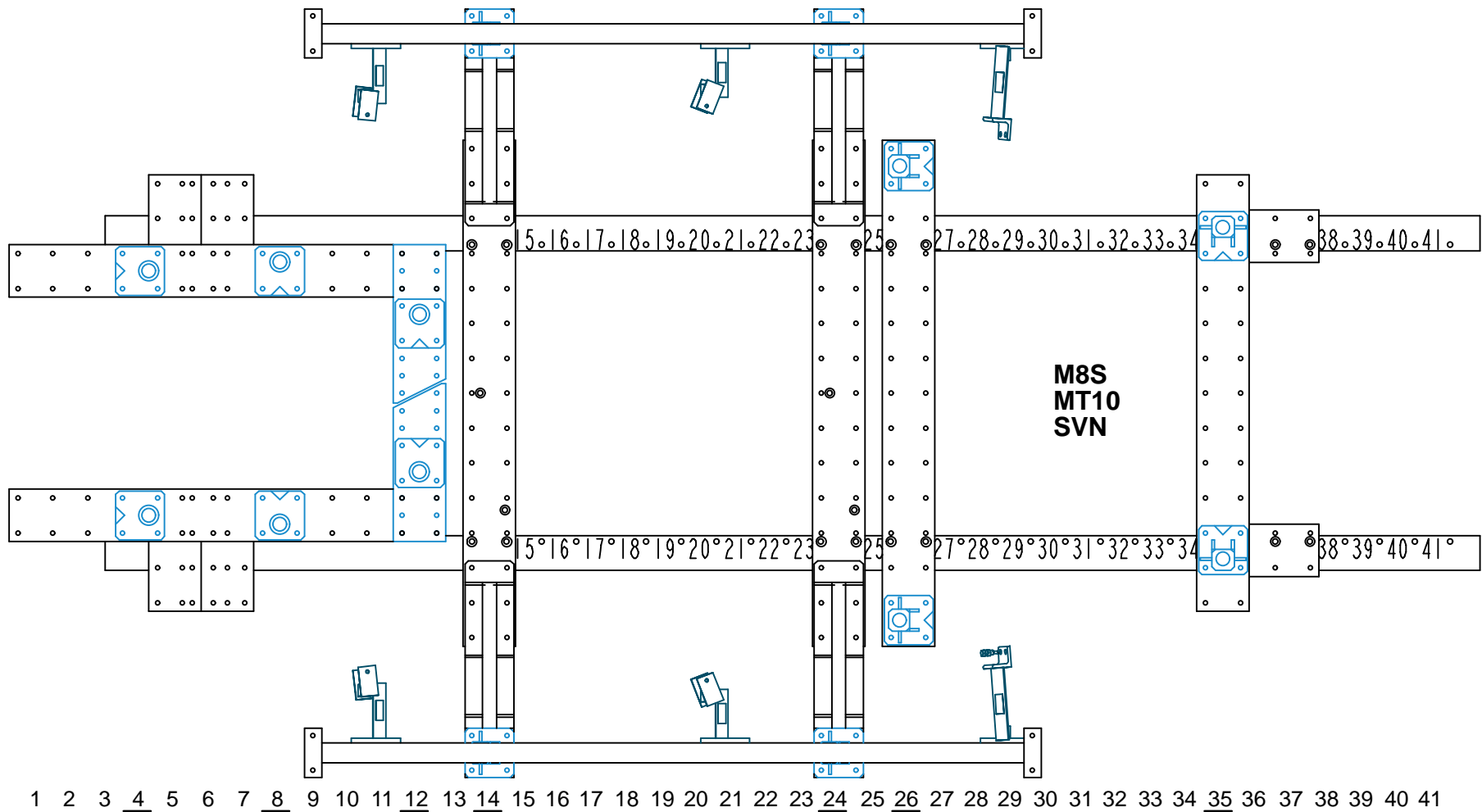
complément au
complementary set to
complemento al
zusatz zu

**2558.500 +
9113.023**

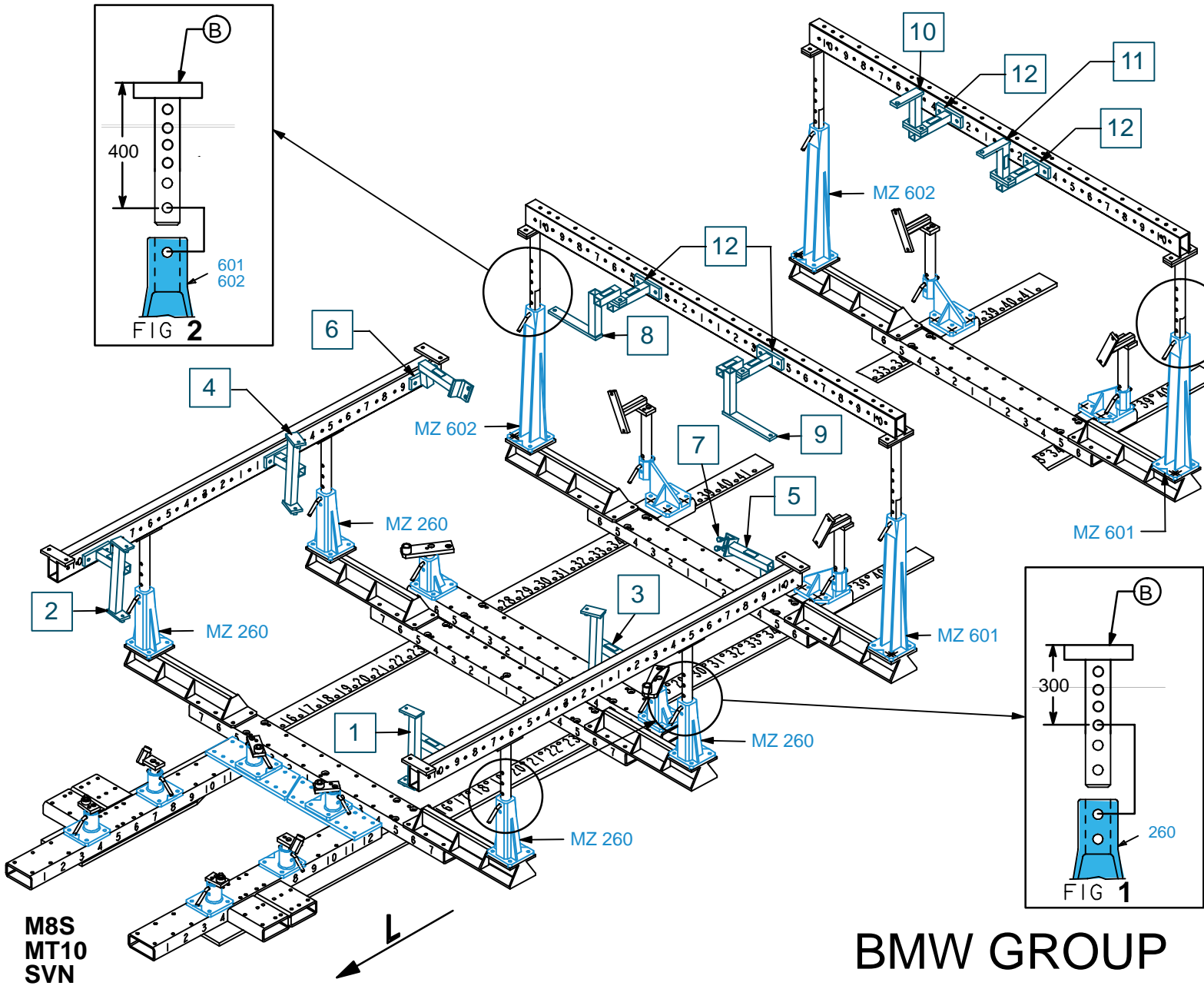
BMW GROUP

2558.900

41 Kg | 24.01.2011 | 2558.900-RVA3-1



2558.900-RVA3-1 | 01



REP.	REFERENCE	NB	PDS	KEY
1	2558.5501	1	2,7	
2	2558.5502	1	2,7	M 8-60 + M 8
3	2558.5503	1	2,6	
4	2558.5504	1	2,6	M 8-60 + M 8
5	2558.5505	1	2,1	
6	2558.5506	1	2,1	
7	2558.5507	2	0,03	
8	2558.5508	1	2,2	
9	2558.5509	1	2,2	M 10-30
10	2558.5510	1	1,3	
11	2558.5511	1	1,3	M 14-25 + M 14
12	2558.5512	2	1,6	955750 + M 12
A	CRM550.01	1	14,8	
B	MRD.F.01	1	0,1	
M 8-60		4		
M 10-30		2		
M 14-25		2		
955750		4		
M 8		4		
M 12		4		
M 14		2		

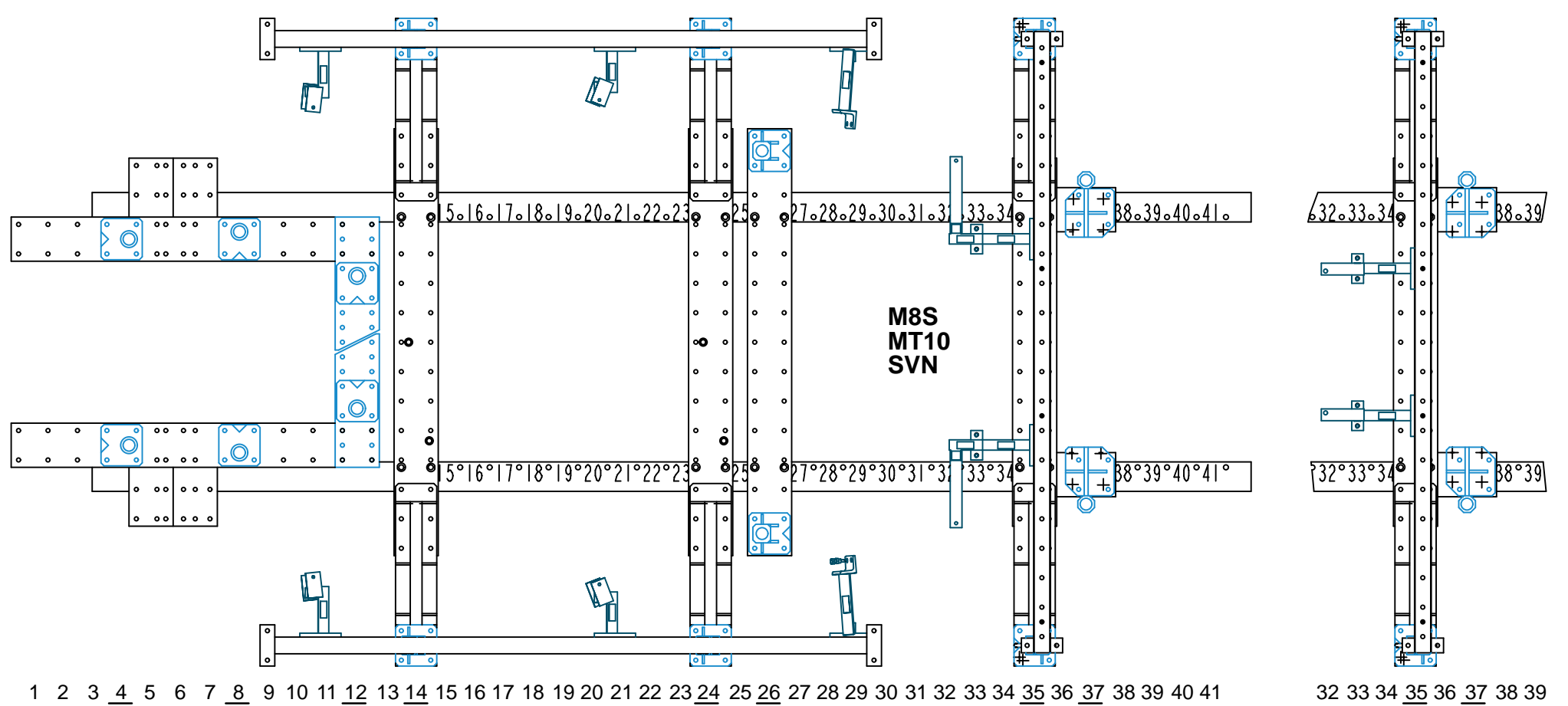
complément au
complementary set to
complemento al
zusatz zu

**2558.500 +
9113.023**

2558.900

41 Kg | 24.01.2011 | 2558.900-RVA3-1

BMW GROUP



2558.900-RVA3-1 | 01